

Rothienorman School Newsletter

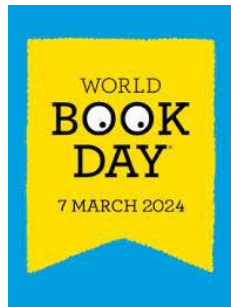
March 2024

Dear Families,

We are most of the way through term 3 already, I can hardly believe it!

Important Dates

Apologies for the error in some dates in the last Newsletter. I can confirm that World Book Day is Thursday 7th March. For World Book Day, pupils and staff can come to school with their favourite book wearing a book character costume or a fresh pair of pyjama's. We will share books throughout the day.



Class photo's are taking place on Monday 25th March.



A Plea to Families – Reading at Home

Learning to read and understand reading takes a lot of practise and reading at home can help with fluency and reading stamina. Most families heavily support reading at home but our plea is to encourage all families to support reading at home. This will help your child become a fluent reader who is able to apply their reading skills across all areas of the curriculum. Thank you for your support!

Walking to School

This a reminder that P1-P3 pupils should be walking to and from school with an adult **over 16 years old**.



REMINDER DATES:

Term 3

Wed 6th March – Dental Nurse P1 & P7

Thurs 7th March – World Book Day

Fri 15th March – Red Nose Day

Mon 25th March – Class Photo's

Thurs 28th March – Formal Reports

Thurs 28th March – Last day of term 3 & Dress Down Day

Fri 29th March – Good Friday Holiday

Term 4

Mon 15th April – First day of term 4

Sat 20th April – PPG Rothie Rainbow Razzle Dazzle 2-6pm

Tues 23rd & Wed 24th April – Parents Nights

Mon 6th May – May Day Holiday

Mon 3rd June – Holiday

Thurs 9th May – PPG Meeting 7pm

Fri 7th June – PPG Annie Moon event

Tues 18, Wed 19 & Thurs 20th June – P7 Transition to Meldrum Academy

Tues 25th- Fri 28th June – P7 Residential Trip

Fri 5th July – Last day of term 4

Please click [here](#) for the annual calendar



Attendance Monitoring

Currently attendance is monitored every month with contact being made with families when attendance drops below 80%. To promote school attendance, Aberdeenshire Policy is to monitor attendance every 2 weeks with contact being made families once attendance drop below 90%. I will start making contact with families whose attendance is lower than 90% with an aim to promote school attendance.

Vision, Values and Aims

Many thanks to everyone who took part in the Values menti during parents night in September. This term the pupils and staff have been consulted on their opinions on our school values and there were strong themes that came through clearly in the consultation. We used the information gathered from the parents and visitor, pupil and staff menti's to form our Vision, Values and Aims below:

The infographic is set against a light blue gradient background. In the top right corner is the Rothienorman Primary School logo, a circular emblem with a building, a book, and a sun. On the left, under the heading 'Our Vision', is the text: 'As an inclusive school community our vision is to develop nurturing relationships created in a climate of mutual respect where everyone has a voice.' Below this, under 'Our Values', are three blue boxes: 'Respect' (with 'Rothie' in a circle), 'Persevere' (with 'Primary' in a circle), and 'Safe' (with 'School' in a circle). On the right, under 'Our Aims', is the text: 'To cascade our RPS values through our curriculum, learning environment and personal achievement to enable all young people to become:'. Below this is a 2x2 grid of colored boxes with icons and text: top-left (red) 'Successful Learners' with a star icon; top-right (blue) 'Confident Individuals' with a thumbs-up icon; bottom-left (purple) 'Responsible Citizens' with a heart and globe icon; bottom-right (green) 'Effective Contributors' with a hand holding a heart icon. A white heart outline is centered over the four boxes.

I plan to consult the pupils on our school motto to replace 'Achieve Your SPARK'.

We are keen to hear your views about the updated Vision, Values and Aims and would be grateful for your feedback on the Microsoft Form below:

<https://forms.office.com/e/HYMcNy7rAn>

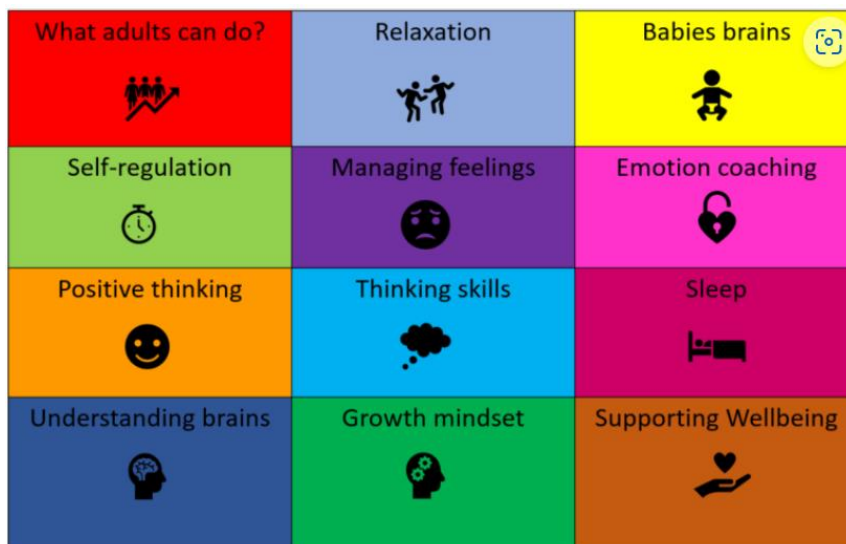
Adverse Weather ❄️ ☁️ 🌧️

Decisions that impact the school day are not taken lightly, but in the event of any changes to the school day or openings please keep an eye on the Aberdeenshire message service on the website (<https://online.aberdeenshire.gov.uk/Apps/Schools-Closures/>) for updates as your first port of call. Safety of staff and children is

paramount when making decisions on transport and school closure. The school will update you as soon as we get any information so please be patient. Keep an eye on local weather updates as any ice, flooding or snow could impact on if and how children and staff get to school. For pupils who receive school transport, where school transport is not running, please do not take your child(ren) to school yourself, unless it is safe to do so. If you do take your child(ren) to school, you must also be able to collect them at the end of the day. Please note that the School Information Line is no longer available and notices of school closures or changes to transport/school day will be updated on the school closure website detailed above.

EPS leaflets

Aberdeenshire Educational Psychology Service have some useful leaflets on key topics that contain advice for parents and carers. The aim of these leaflets is to help parents and carers help build resilience, connections and secure attachments. These leaflets can be found [here](#).



And Finally...

As always, please do not hesitate to contact us should you have any questions or comments via the email address rothienorman.sch@aberdeenshire.gov.uk or complete the new Feedback Microsoft Form <https://forms.office.com/e/akB0Ar5Hxj>

Kind regards,

Michelle Strachan,

Head Teacher



@RothieSchool

<http://rothienorman.aberdeenshire.sch.uk/>



@CrudenHutton